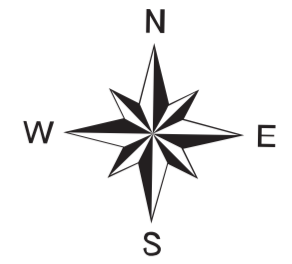
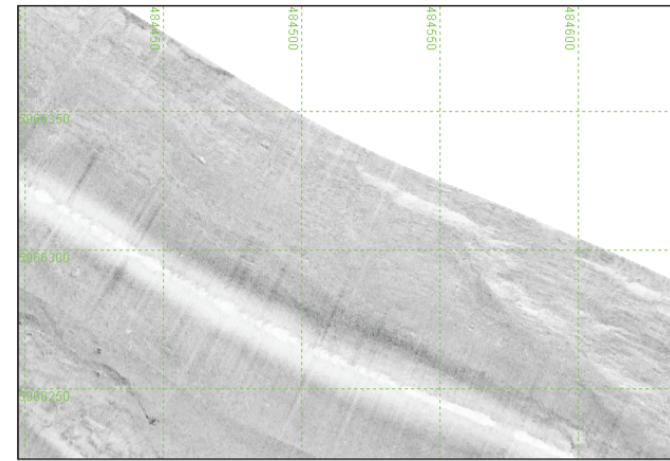


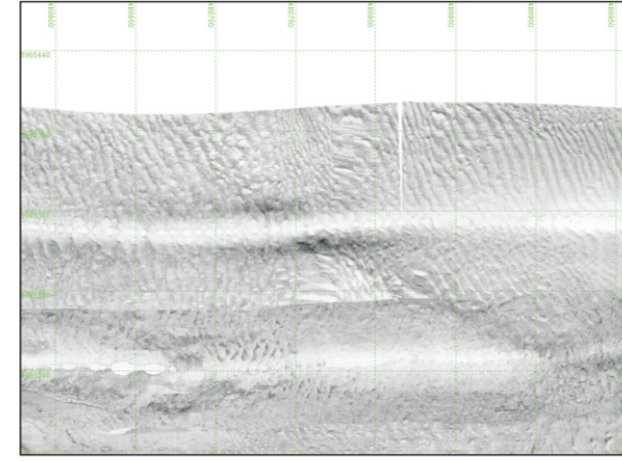
Seitensichtsonar - Untersuchungen Elbe - Glameyer Stack - 2012



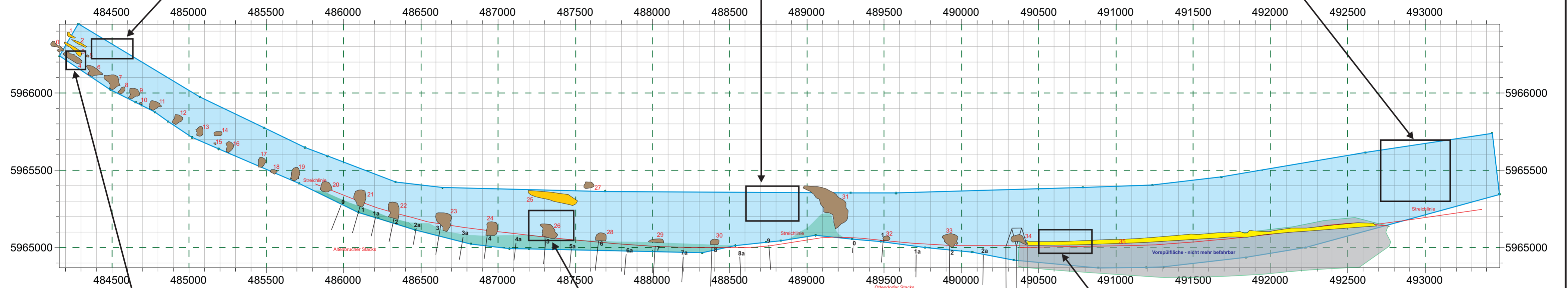
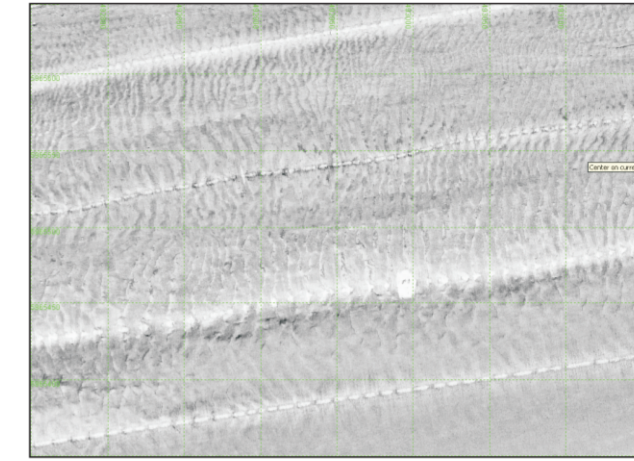
Ausschnitt 1



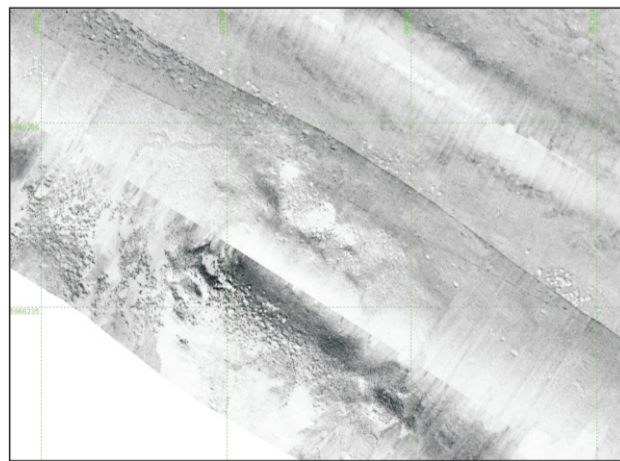
Ausschnitt 3



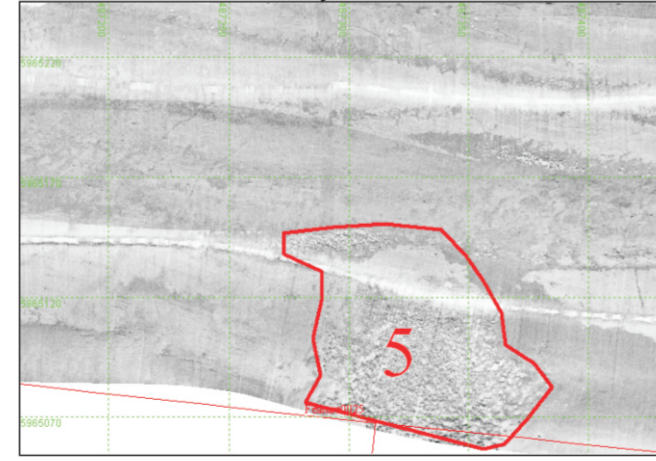
Ausschnitt 5



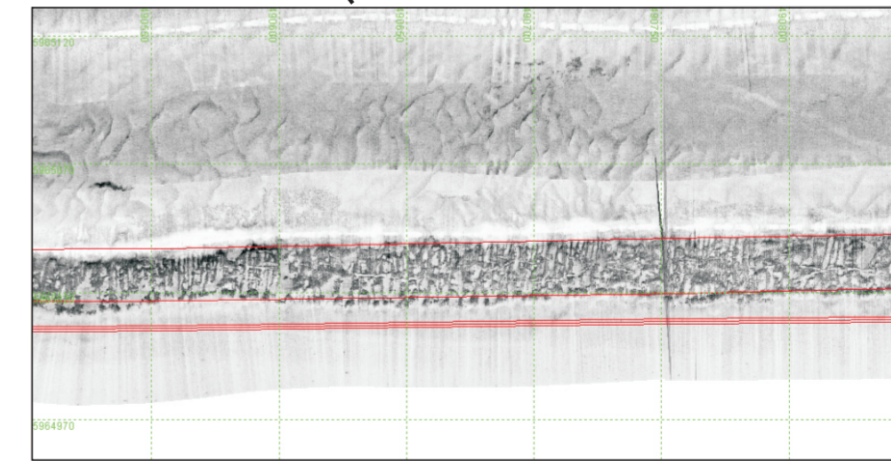
Ausschnitt 2








Ausschnitt 4



Ausschnitt 6



-  Mittel- bis Grobsand
-  Steine / Schüttung
-  nicht befahrbar
-  Vorspülfläche, nicht mehr befahrbar
-  gespülter Sand

Auftraggeber : Bio Consult Schuchardt & Scholle GbR		
Projekt: Seitensichtsonar - Untersuchungen UWA Glameyer Stack		
 Geophysik Karl – Liebknecht – Str. 64 14612 Falkensee Tel.: 03322 / 207 223	Untersuchungszeitraum: 16. Dez. 2012	
	Bearbeiter : Peter Rüdinger (Dipl. Geophysiker)	Datum : 17.05.13
	UTM Zone 32 WGS 84	Anlage 1 Ergebnisse Seitensichtsonar